

360 Customer Property View

18755 Bearpath Trail, Eden Prairie, MN 55347

Single Family
(SF) Single Family
 Seller Contribution:

List #: **6247943**
 Status: **Coming Soon**

List Price: **\$1,730,000**
 Orig List Pr: \$1,730,000
 Close Price:



Property ID: **1911622220011**
 Year Built: **2001**

Stories: **Two**
 Constr Status: **Previously Owned**
 Foundation Sz: **2,152**
 Abv Grd Fin SF: **5,189**
 Blw Grd Fin SF: **2,945**
 Total Fin SF: **8,134**
 School Dist: **272 - Eden Prairie (952-975-7000)**

Water Type:
 Acres/Sqft: **0.480/20,909**
 Lot Size: **117x164x116x173**
 List Date: **08/24/2022**

Total Bed/Bath: **6/6**
 Garage Stalls: **3**
 Tax Year: **2022**
 Tax Amount: **\$20,482**
 Tax Assess Bal: **\$0**
 Tax w/ Assess: **\$0**
 Homestead: **Yes**
 Year/Seasonal: **Yearly**
 MapPg/Cd: **132/B3**

County: **Hennepin**
 Postal City: **Eden Prairie**
[DOM:](#)
[CDOM:/PDOM:](#)

Directions: **212 West to Dell Road, south to Bearpath's gate on the right side. Once thru the gate, turn right and follow Bearpath Trail to home.**

General Information

Legal Desc: **LOT 002 BLOCK 003 BEARPATH 9TH ADDN**
 Land Lease?: **No** Rental License:
 Fract Ownr: **No**
 Manufactured: **No** Common Wall: **No** Fire #:
 Comp/Dev/Sub: **Bearpath Golf and Country Club** Insur Fee: **\$0**
 Assc Mgmt Comp: **Sharper Management** Phone: **952-224-4777** Assc Fee: **\$275/Monthly**
 Assc Fee Incl: **Professional Mgmt, Sanitation, Security Staff**
 Restr/Covenant: **Architecture Committee, Mandatory Owners Assoc**
 Lot Desc: **On Golf Course, Tree Coverage - Medium**
 Road Frontage: **Curbs, No Outlet/Dead End, Paved Streets, Private** Pasture:
 Zoning: **Residential-Single Family** Wooded:
 Power Company: **Xcel Energy** Taxable:
 Accessibility: **None**

Remarks

Public: **Welcome home to this beautiful custom home by Wooddale Builders in the desirable, gated community of Bearpath. This classic 2-story home features a grand entrance flooded with natural light. The spectacular floor to ceiling windows in the great room showcase views of the 14th green. The main level has plenty of space to entertain, an executive office and boasts a large primary bedroom and luxurious ensuite bath. The open cook's kitchen is adjacent to the beautiful screened porch with cozy fireplace. Head to the deck to enjoy the views of the course. The upper level has 3 beds/2 baths, as well as a bonus room perfect for a reading area, office or playroom. A walkout lower level is an entertainer's paradise! Spacious game area, wet bar and gorgeous wine cellar are sure to impress. Head to the theatre room for movie night or game day! 2 more beds/ 2 baths to complete this level. Enjoy the lifestyle this private, family friendly community has to offer. Tennis courts, pools, golf and more!**

Structure Information

Room	Level	Dimen	Bedrooms	6	Heat:	Forced Air, In-Floor Heating	
Living Room	Main	23x20	Bathrooms		Fuel:	Natural Gas	
Dining Room	Main	18x13	Total: 6	3/4: 2	Air Cond:	Central	
Family Room	Lower	25x20	Full: 2	1/2: 2	Water:	City Water/Connected	
Kitchen	Main	18x17	Bath Desc: 1/2 Basement, 3/4			Sewer:	City Sewer/Connected
Bedroom 1	Main	19x18	Basement, Basement, Bathroom Ensuite,			Garage Stls: 3	
Bedroom 2	Upper	18x17	Full Jack & Jill, Full Master, Main Floor			Garage SF: 1,136	
Bedroom 3	Upper	14x14	1/2 Bath, Main Floor Full Bath, Private				
Bedroom 4	Upper	20x15	Master, Separate Tub & Shower, Two				
Bedroom 5	Lower	18x14	Basement Baths, Upper Level 3/4 Bath,				
Billiard Room	Lower	15x13	Upper Level Full Bath, Walk-In Shower				
Media Room	Lower	20x14	Stall				
Bar/Wet Bar Room	Lower	16x13					
Informal Dining Room	Main	17x13	Finished SqFt	Total SqFt			
Office	Main	16x15	Abv Gd: 5,189	Abv Gd: 5,384			
			Blw Gd: 2,945	Main Fl: 3,640			
				Blw Gd: 3,640			
			Total: 8,134	Total: 9,024			

Features

Special Search: **3 BR on One Level, Main Floor Bedroom, Main Floor Laundry**
 Dining Room Desc: **Breakfast Area, Eat In Kitchen, Informal Dining Room, Separate/Formal Dining Room**
 Family Room Char: **2 Story/High/Vaulted Ceilings, Entertainment/Media Center, Family Room, Great Room, Lower Level, Main Level**
 Fireplaces: **4 -- Characteristics: Amusement Room, Family Room, Gas Burning, Living Room**
 Appliances: **Air-To-Air Exchanger, Central Vacuum, Cooktop, Dishwasher, Disposal, Exhaust Fan/Hood, Microwave,**

Refrigerator, Wall Oven
 Basement: Concrete Block, Drain Tiled, Finished (Livable), Full, Sump Pump, Walkout
 Constr Materials: Age 8 Years or Less, Asphalt Shingles, Pitched
 Roof: Invisible
 Fencing: Invisible
 Amenities-Unit: Deck, Hardwood Floors, In-Ground Sprinkler, Kitchen Window, Patio, Porch, Security System, Tile Floors, Walk-In Closet, Washer/Dryer Hookup
 Parking Char: Attached Garage, Driveway - Other Surface, Garage Door Opener, Heated Garage, Insulated Garage
 Exterior: Brick/Stone, Stucco

MLS #: 6247943 [18755 Bearpath Trl , Eden Prairie, MN 55347](#)

18755 Bearpath Trl , Eden Prairie, MN 55347

MLS #: 6247943



photo-001.jpg



photo-002.jpg



photo-006.jpg



photo-007.jpg



photo-003.jpg



photo-004.jpg



photo-008.jpg



photo-009.jpg



photo-0027.jpg



photo-0028.jpg



photo-0029.jpg



photo-0030.jpg

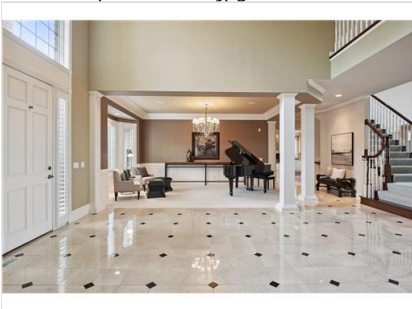


photo-0031.jpg

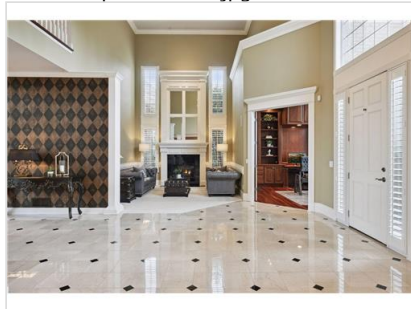


photo-0032.jpg

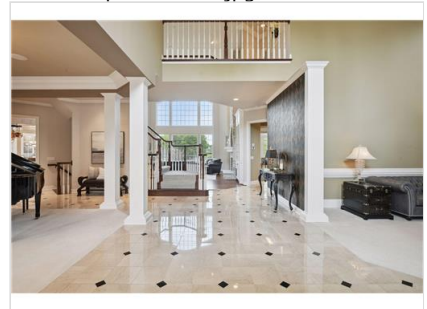


photo-0033.jpg

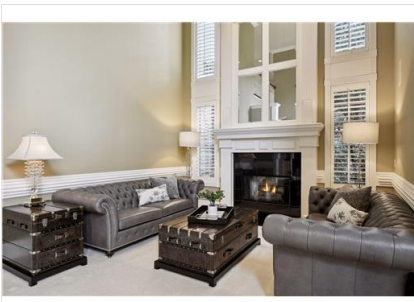


photo-0034.jpg



photo-0035.jpg

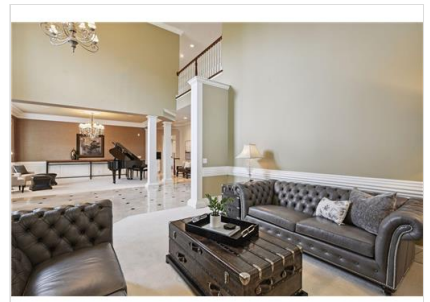


photo-0036.jpg



photo-0037.jpg



photo-0038.jpg



photo-0039.jpg

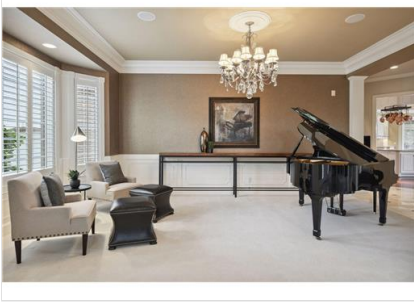


photo-0040.jpg

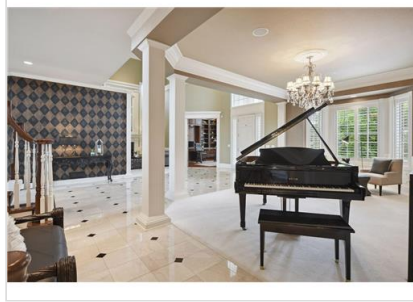


photo-0041.jpg

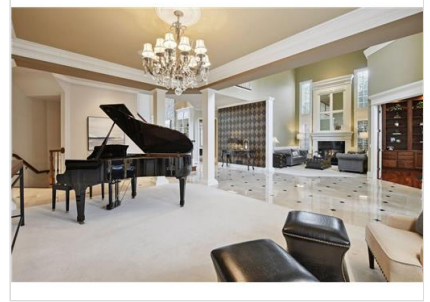


photo-0042.jpg

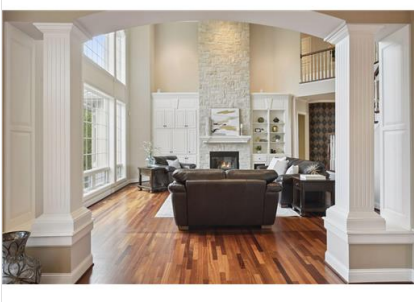


photo-0043.jpg



photo-0044.jpg



photo-0045.jpg



photo-0046.jpg



photo-0047.jpg



photo-0048.jpg



photo-0049.jpg



photo-0050.jpg



photo-0051.jpg

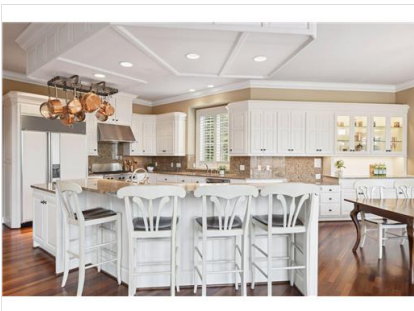


photo-0052.jpg

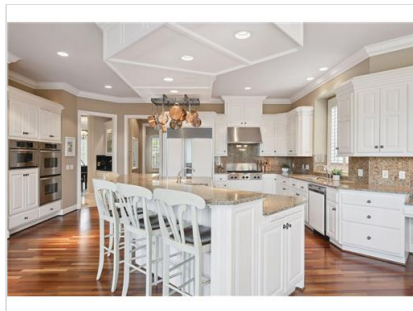


photo-0053.jpg



photo-0054.jpg



photo-0055.jpg



photo-0056.jpg



photo-0057.jpg



photo-0058.jpg



photo-0059.jpg



photo-0060.jpg



photo-0061.jpg



photo-0062.jpg



photo-0063.jpg



photo-0064.jpg

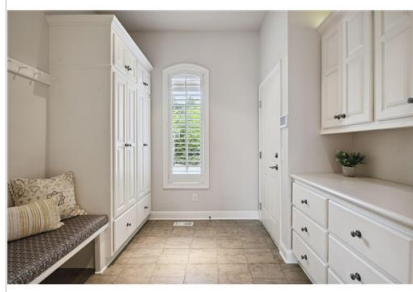


photo-0065.jpg



photo-0066.jpg



photo-0067.jpg



photo-0068.jpg



photo-0069.jpg

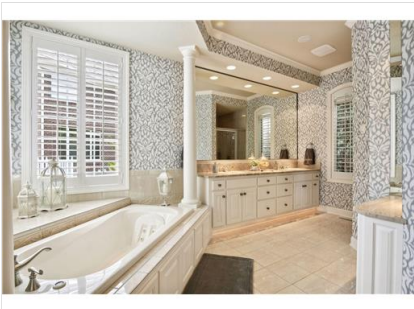


photo-0070.jpg

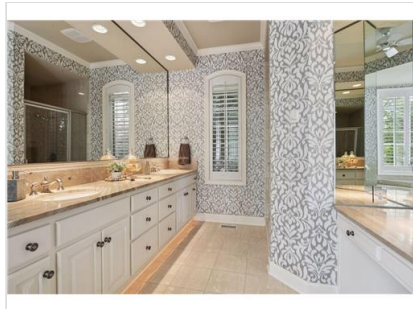


photo-0071.jpg



photo-0072.jpg



photo-0073.jpg



photo-0074.jpg



photo-0075.jpg

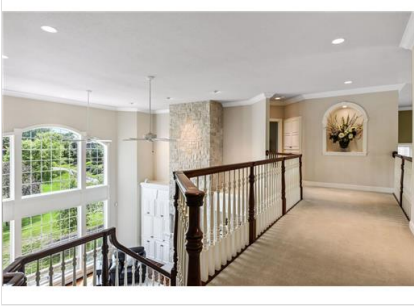


photo-0076.jpg

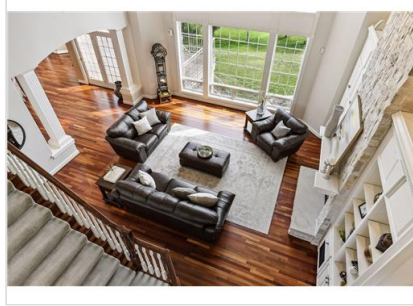


photo-0077.jpg



photo-0078.jpg



photo-0079.jpg



photo-0080.jpg

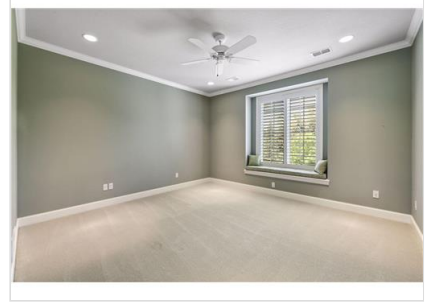


photo-0081.jpg

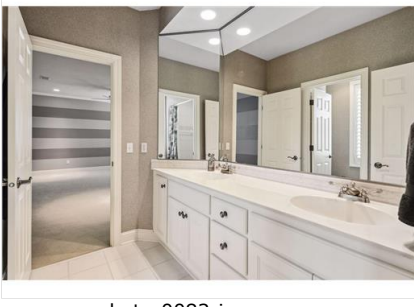


photo-0082.jpg

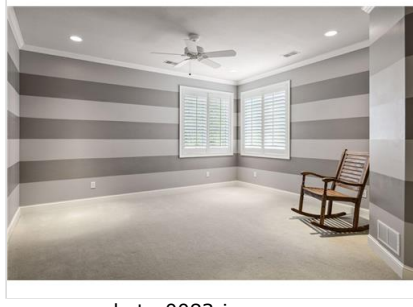


photo-0083.jpg

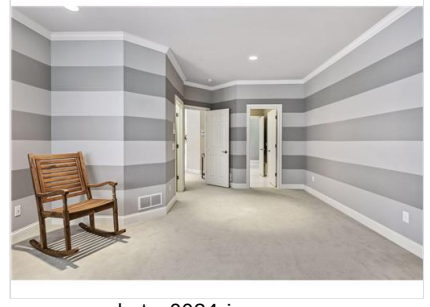


photo-0084.jpg



photo-0085.jpg



photo-0086.jpg



photo-0087.jpg



photo-0088.jpg

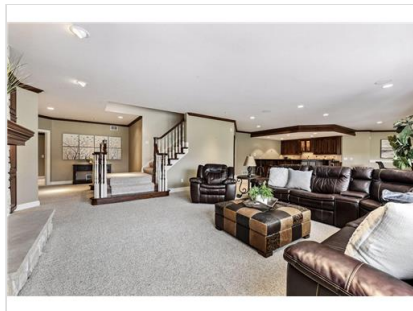


photo-0089.jpg



photo-0090.jpg



photo-0091.jpg



photo-0092.jpg



photo-0093.jpg

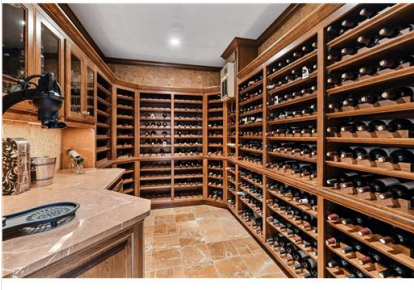


photo-0094.jpg



photo-0095.jpg



photo-0096.jpg



photo-0097.jpg



photo-0098.jpg



photo-0099.jpg



photo-00100.jpg



photo-00101.jpg



photo-00102.jpg



photo-00103.jpg



photo-00106.jpg



photo-00107.jpg

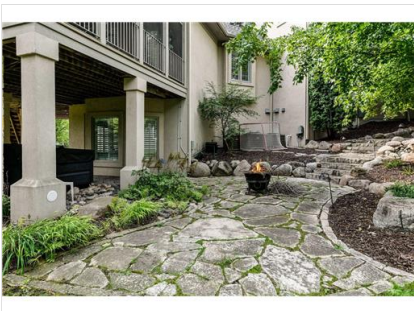


photo-00109.jpg



photo-00110.jpg



photo-00111.jpg



photo-0012.jpg



photo-0013.jpg



photo-0015.jpg



photo-0016.jpg



photo-0018.jpg



photo-0019.jpg



photo-0020.jpg



photo-0021.jpg



photo-0024.jpg



photo-0025.jpg