

### 360 Customer Property View

8976 English Turn, Eden Prairie, MN 55347-3445

**Single Family**  
**(SF) Single Family**  
Seller Contribution:

List #: **6218324**  
Status: **Coming Soon**

List Price: **\$1,475,000**  
Orig List Pr: \$1,475,000  
Close Price:



Property ID: **1911622230033**  
Year Built: **2000**  
  
Stories: **One**  
Constr Status: **Previously Owned**  
Foundation Sz: **2,536**  
Foundation Dim:  
Abv Grd Fin SF: **2,536**  
Bel Grd Fin SF: **2,158**  
Total Fin SF: **4,694**  
School Dist: **272 - Eden Prairie (952-975-7000)**  
  
Water Type:  
Acres/Sqft: **0.490/21,344**  
Lot Size: **154x221x76x170**  
List Date: **06/30/2022**

Total Bed/Bath: **4/4**  
Garage Stalls: **3**  
Tax Year: **2022**  
Tax Amount: **\$16,703**  
Tax Assess Bal: **\$0**  
Tax w/ Assess: **\$16,703**  
Tax Assess Pnd: **No**  
Homestead: **Yes**  
Year/Seasonal: **Yearly**  
MapPg/Cd: **132/B3**  
  
County: **Hennepin**  
Postal City: **Eden Prairie**  
[DOM:](#)  
[CDOM:/PDOM:](#)

Directions: **Hwy 212 to south on Dell Road to the Bearpath entrance on the right. Turn right after the gate house and follow Bearpath Trail to left onto English Turn to the 2nd house on the right.**

#### General Information

Legal Desc: **LOT 006 BLOCK 001 BEARPATH 6TH ADDN**  
Section/Township/Range: **19/116/22**  
Land Lease?: **No** Rental License:  
Fract Ownr: **No**  
Manufactured: **No** Common Wall: **No** Fire #:  
Comp/Dev/Sub: **Bearpath 6th Add** Insur Fee: **\$0**  
Assc Mgmt Comp: **Sharper Management** Phone: **952-698-2061** Assc Fee: **\$275/Monthly**  
Assc Fee Incl: **Professional Mgmt, Sanitation, Security Staff**  
Lot Desc: **On Golf Course, Tree Coverage - Medium, Underground Utilities**  
Road Frontage: **No Outlet/Dead End, Paved Streets, Private** Pasture:  
Rd Responsible: **Private Maintained Road** Tillable:  
Zoning: **Residential-Single Family** Wooded:  
Power Company: **Xcel Energy** Taxable:  
Accessibility: **None**

#### Remarks

Public: **This beautiful 4 bed and 4 bath one story home is located in the picturesque Bearpath community. Views behind the house are to the 15th green of a Jack Nicklaus-designed golf course, on a 1/2 acre lot with lush landscaping, patio areas, a pond with a babbling waterfall, and gorgeous views. The home showcases gleaming Brazilian cherry floors, millwork, and cabinetry. Ceilings are knockdown textured with recessed lighting. The main floor features the owner's suite, an office with French doors, a hearth room with a 2-sided gas-burning fireplace, gorgeous cherry and granite kitchen with new appliances, a main floor laundry, a big mudroom with lockers, a walk-in pantry, and a 3-car insulated and heated garage. The walk-out lower level offers a wet bar, wine cellar with chiller, pool table, gas-burning fireplace, and 3 bedrooms, all with big walk-in closets and great privacy. Be sure and take the 3-D tour of this remarkable home and read the sellers' informative Welcome to the Neighborhood!**

#### Structure Information

Room	Level	Dimen	Bedrooms	Bathrooms	Heat:	Forced Air
Living Room	Main	22x16.5	4		Fuel:	Natural Gas
Dining Room	Main	14.5x13		Total: 4 3/4: 1 1/4: 0	Air Cond:	Central
Family Room	Main	18.5x11		Full: 2 1/2: 1	Water:	City Water/Connected
Kitchen	Main	18.5x12.5			Sewer:	City Sewer/Connected
Bedroom 1	Main	20x15			Garage Stls:	3
Bedroom 2	Lower	20x18.5			Garage Dim:	36x25
Bedroom 3	Lower	13x12.5			Garage SF:	913
Bedroom 4	Lower	18x15				
Foyer	Main	14.5x12.5				
Office	Main	14.5x13				
Informal Dining Room	Main	14x9.5				
Laundry	Main	12.5x7.5				
Deck	Main	18x15.5				
Recreation Room	Lower	36x24				
			<b>Finished SqFt</b>	<b>Total SqFt</b>		
			Abv Gd: <b>2,536</b>	Abv Gd: <b>2,536</b>		
			Blw Gd: <b>2,158</b>	Main Fl: <b>2,536</b>		
				Blw Gd: <b>2,536</b>		
			Total: <b>4,694</b>	Total: <b>5,072</b>		

#### Features

Special Search: **3 BR on One Level, All Living Facilities on One Level, Main Floor Bedroom, Main Floor Laundry**  
Dining Room Desc: **Breakfast Bar, Informal Dining Room, Separate/Formal Dining Room**  
Family Room Char: **Entertainment/Media Center, Great Room, Main Level**  
Fireplaces: **2 -- Characteristics: 2-Sided, Amusement Room, Gas Burning, Living Room**  
Appliances: **Air-To-Air Exchanger, Central Vacuum, Cooktop, Dishwasher, Disposal, Dryer, Exhaust Fan/Hood, Furnace Humidifier, Gas Water Heater, Microwave, Refrigerator, Wall Oven, Washer, Water Filtration System, Water Osmosis System**

Basement: **Concrete Block, Drain Tiled, Drainage System, Finished (Livable), Full, Poured Concrete, Storage Space, Sump Pump, Walkout**

Constr Materials: **Shakes**

Roof: **Shakes**

Amenities-Unit: **Ceiling Fan(s), Deck, Ethernet Wired, French Doors, Hardwood Floors, Hot Tub, In-Ground Sprinkler, Kitchen Center Island, Kitchen Window, Local Area Network, Main Floor Master Bedroom, Master Bedroom Walk-In Closet, Natural Woodwork, Panoramic View, Patio, Security System, Tile Floors, Walk-In Closet, Washer/Dryer Hookup, Wet Bar**

Parking Char: **Attached Garage, Driveway - Asphalt, Garage Door Opener, Heated Garage, Insulated Garage**

Exterior: **Brick/Stone, Stucco**

MLS #: **6218324** [8976 English Turn, Eden Prairie, MN 55347-3445](#)

**8976 English Turn, Eden Prairie, MN 55347-3445**

MLS #: **6218324**



This former model for Wooddale Builders offers 4 beds and 4 baths, one level living, and a 1/2 acre lot along the 15th green in the gated Bearpath community of Eden Prairie. The eaves and dormers have lights for a pretty nighttime effect.



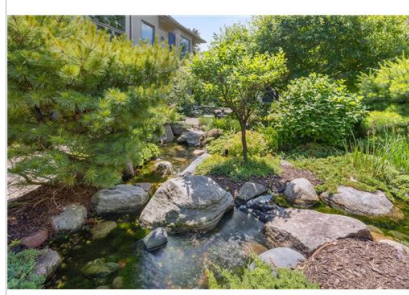
A circular driveway brings you to a pretty front exterior with lush landscaping and a water feature. The front door has a phantom screen for catching a nice breeze throughout the house. The service door, at right, leads to the mudroom and laundry.



The owners took great care to plan landscaping to give the backyard privacy when in use, yet also providing picturesque golf course views from the various entertaining areas and deck. This home features Marvin windows and Anderson sliding doors.



Graceful curving paver walkways meander in the backyard entertaining space through well-designed landscaping with pond views. The firepit area offers a cozy gathering spot and spectacular views year round, including seasonal views of Lake Riley.



The gently babbling pond and waterfall flows through part of the backyard, connecting the firepit area to the tucked-away hot tub and patio. With proper care, Koi will thrive in the pond.



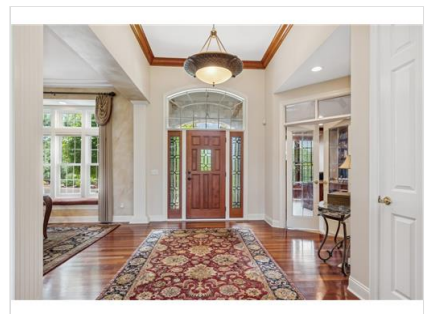
Landscaping around the hot tub has been strategically planned for privacy without compromising the views out to the course. Plantings throughout the yard include iris, hydrangea, daylilies, lilacs, sedum, vinca, spirea, crab apple, and much more.



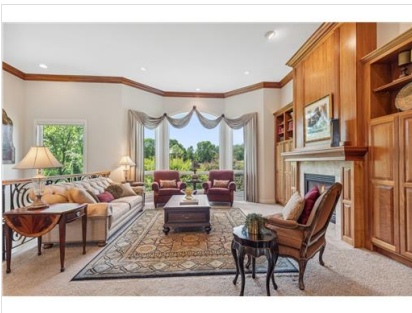
Here is a nice, long view of the private hot tub area and gently flowing pond which winds through part of the back yard. A big grassy area for play is just beyond the landscaping. The owners have never had a golf ball come into their seating areas.



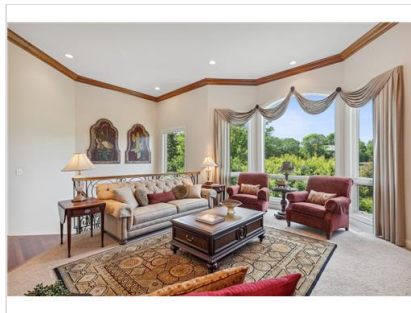
The deck was recently stained and the elevated position of the deck offers sweeping, long views to enjoy during your showing! Take a moment to observe the gorgeous scenery of the golf course and beyond, including seasonal views of Lake Riley.



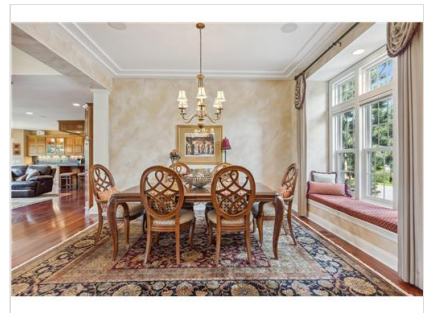
Gleaming Brazilian cherry floors greet you upon entry. Notice the cherry crown molding and the nice, high ceilings throughout. The front door was new in October 2017 and includes a phantom screen. At right is the office and coat closet.



This spacious living room offers a spectacular view to the 15th green through the big bay windows! Beautiful cherry built-ins, with accent lighting on top, surround the two-sided gas-burning fireplace. Cherry crown molding accents the ceilings.



Sitting up high, the views from the main level are gorgeous year round. A custom-made wrought iron stairway railing winds down toward the lower level, with a tall window offering yet another expansive view of the landscaping and golf course.



The dining room, located to the right from the front door, offers plenty of space for gatherings, a cushioned window seat with a view to the front, a detailed ceiling, and built-in speakers, which are centrally controlled.



The formal dining room is located such that guests have an open view to other portions of the main floor. The owners will include the sound system with the house, so music in your new home will be plug and play on Day One!



The study features glass French doors, a window seat, a wall of built-in bookcases, and a desk large enough for two. Built-in speakers are found here, in the dining room, the kitchen, the primary bedroom suite, the deck and the patio, too.



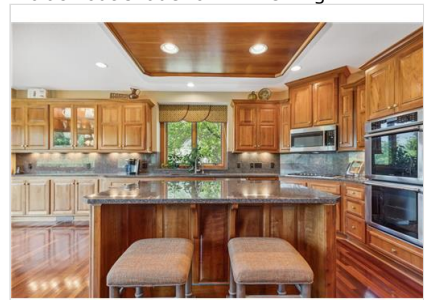
Accent lighting brings a warm glow to the cherry woodwork in the hearth room. Behind the cabinets at right is a TV and an entertainment system new in 2019. In addition to a regular shade, there is a remote-controlled black out shade for TV viewing.



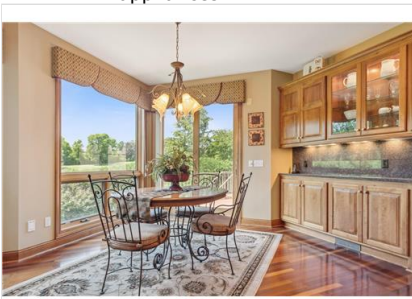
The kitchen has a 5-burner gas cooktop with cast iron griddle, double ovens, fabulous cherry cabinets, granite countertops, built-in speakers, a center island breakfast bar, plus new Thermadore and high-end GE Monogram stainless steel appliances.



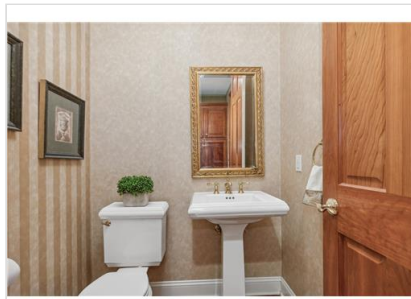
You'll find loads of cabinetry and lots of counter space here! The island has a line of electrical plugs on the far side. With new appliances, gleaming cabinets and granite countertops, this kitchen will be a pleasure in which to work and entertain.



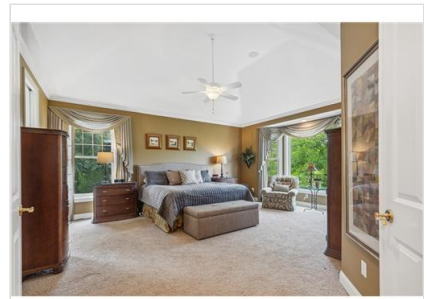
This is the hub of the home, with the hearth room just to the left, and big picture windows along the back to bring nature inside. Additional features are under-cabinet lighting and a generously-sized island with recessed lighting above.



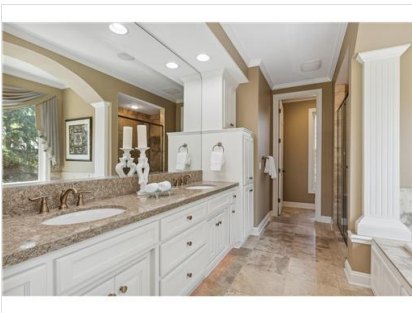
With views galore, the informal dining area has deck access, a handy buffet area, and lots of light to enjoy a pretty day. Picture yourself with your morning cup of coffee or tea, enjoying the serenity and quiet of this location.



The powder room is perfectly tucked away between the kitchen and the mud room. Wallpaper adorns the walls and hardwood flooring runs through here as well.



The primary bedroom suite has a dramatic raised ceiling, views to the golf course through the oversized bay windows, centrally controlled built-in speakers, and a walk-in closet, to the left, with built-ins designed by California Closets.



The owners bathroom was updated in 2017 and includes a new Corian vanity top and sink, sprayed enamel cabinetry, new fixtures, and new hardware. You'll find ample cabinet space here! The water closet was repainted and new hardware also installed.



The big whirlpool tub also has new fixtures and a peaceful setting for a long, luxurious bath. Ready for a nice, long and relaxing soak in this spectacular setting?



A new shower door was installed in 2017, fixtures were updated, and the grout and tile have been meticulously treated and maintained. Notice the under cabinet lighting, which could double as a warmly glowing nightlight.



What a terrific mudroom! Shown at far left is a drop-zone and the owners had a service door added and cherry lockers to hang coats, with drawers for winter or sports gear. The garage is heated and insulated with WiFi controlled garage door openers.



The service door's window pulls down to become a screen. The California Closets-designed walk-in pantry has ample shelving, baskets, hanging rods, and a window with a view to the front, bringing in natural light during the daytime.



Located just inside from the garage, the main floor laundry room features a newer washer and dryer, a pull-down ironing board, a rod over the sink for hanging clothing to dry, and a closet, out of sight at left, for coats and boots.



The big lower level family room features built-in speakers, a gas-burning fireplace with remote control, and a high-end 75" TV and entertainment system, installed in 2019, which will stay with the house. A slider leads to the firepit and hot tub.



The lower level entertainment center is positioned so the TV may be viewed from most spots in order to watch a sporting event, a concert, or to enjoy music while you play pool, sit at the bar, or relax in front of the cozy gas-burning fireplace.



The lower level is an entertainer's dream! This level features a wet bar, a wine cellar, and a pool table, which stays with the home. The owners will also leave the ping pong table top, as well as all the pool table equipment.



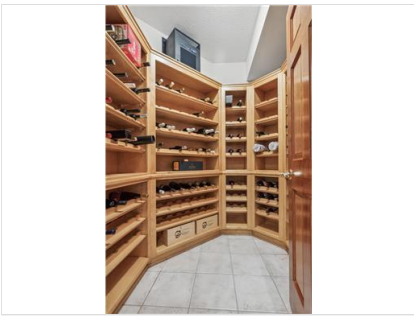
Through the door beyond the pool table is the storage and utility room. The home is wired for CAT-5 and Internet so you'll have great speed here! Also shown is the wine cellar which has a chiller, and room for about 200 bottles of wine.



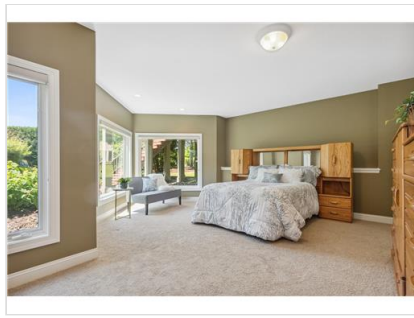
The wet bar was designed for entertaining and it has everything you'll need for a big party or a small gathering. In addition to the glass cabinets, there are locking storage drawers in case you want to safely tuck something away.



The wet bar features a dishwasher and mini fridge and lots and lots of cabinet space. With recessed lighting and views to the gaming and lounging areas, this is sure to be a favorite spot to relax and unwind. Take the 3-D tour for more details!



Welcome to the wine cellar! The chiller will maintain a steady temperature and helps maintain relative humidity to create the perfect environment for your wine collection. There is space for about 200 bottles plus shelving for specialty wines.



At the north end of the lower level, you'll find the guest suite, tucked away off a hallway. With views to the west from huge windows, there is nice light and great privacy. The windows all have sheer blinds and black out shades as an option, too.



The super spacious guest suite, one of three bedrooms on the lower level, is a private space with a large walk-in closet, plus fabulous views from the oversized windows. Your guests just may never want to leave!



This is one of two bathrooms on the lower level, located just outside the guest bedroom, in a hallway off the recreation room. Please see the floor plan sketches for the precise layout.



California Closets designed this space for the seller's hobby, and it would be great for crafting, too. With the removal of the peninsula desk, the room easily converts back to a bedroom. The huge window looks to the firepit and course beyond.



The spacious 2nd bedroom in the lower level features a built-in desk, a walk-in closet, and additional storage cabinets for all the extras.



The 3rd bedroom on the lower level has a built-in desk, and just outside the big window, there is a riot of purple iris when they are in bloom early summer. This bedroom has a walk-in closet, as do all the other bedrooms.



This is the full bath in the south wing, near two of the three bedrooms on the lower level. Just to the right is the tub and shower. Be sure and read the sellers' Welcome to the Neighborhood for a happy description of the day the owners moved in!



Main level floor plan sketch



Lower level floor plan sketch



View from English Turn as you approach the house. Be sure and take the 3-D virtual tour of this beautiful Bearpath home!